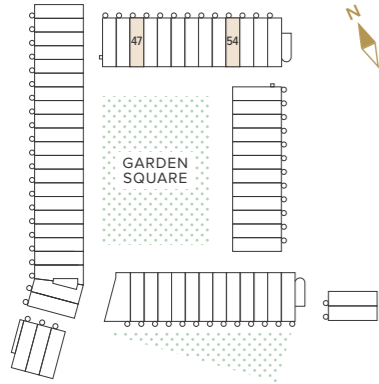


TYPE C.V1 4 BEDROOM HOUSE

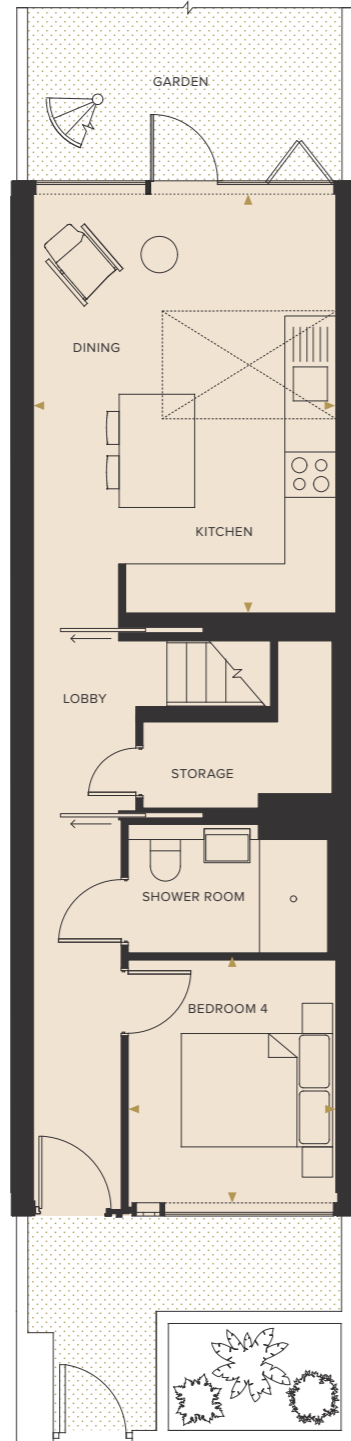
Houses 47, 54



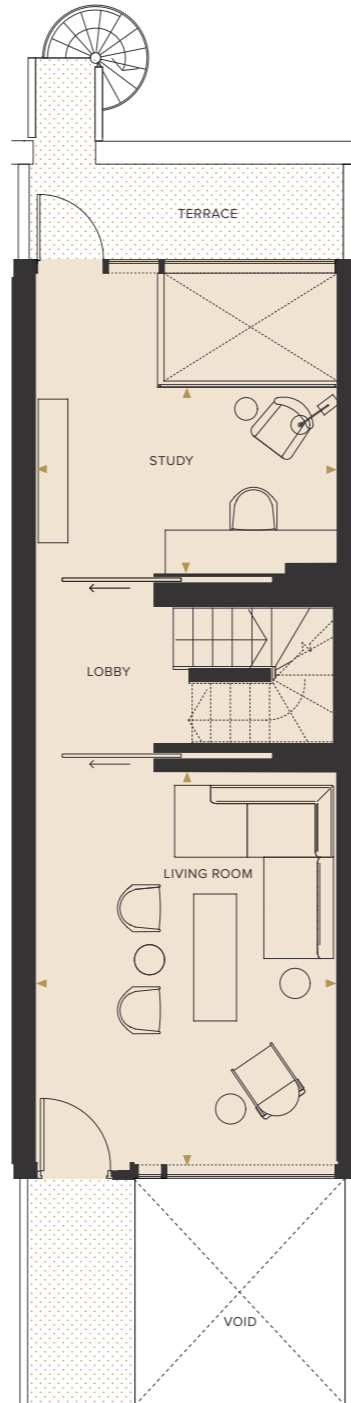
GROSS INTERNAL AREA
194.0 m² 2,088 ft²

KITCHEN / DINING	4.00 x 5.54m	13'1" x 18'2"
LIVING ROOM 1	4.00 x 5.00m	13'1" x 16'4"
STUDY	4.00 x 2.47m	13'1" x 8'1"
BEDROOM 1	4.00 x 3.65m	13'1" x 11'11"
BEDROOM 2	4.00 x 4.95m	13'1" x 16'2"
BEDROOM 3	4.00 x 3.10m	13'1" x 10'2"
BEDROOM 4	2.75 x 3.27m	9'0" x 10'8"
ROOF TERRACE	4.12 x 8.50m	13'6" x 27'10"

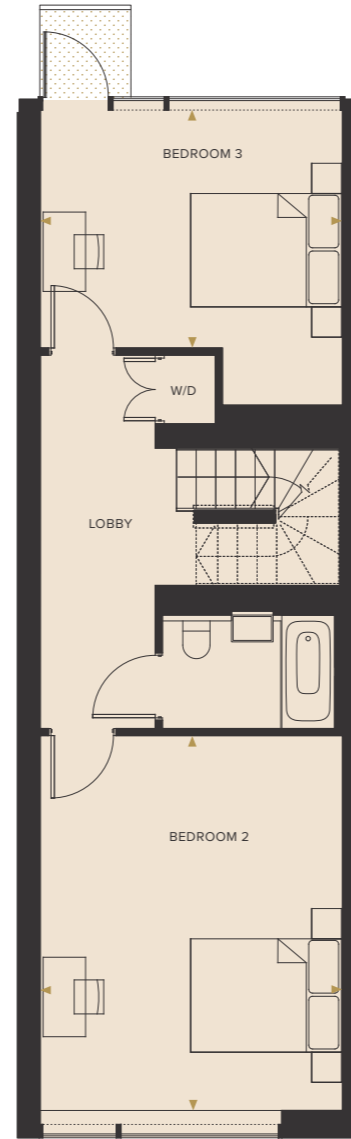
KEY
C : Cupboard
W : Wardrobe
W/D : Washer/Dryer



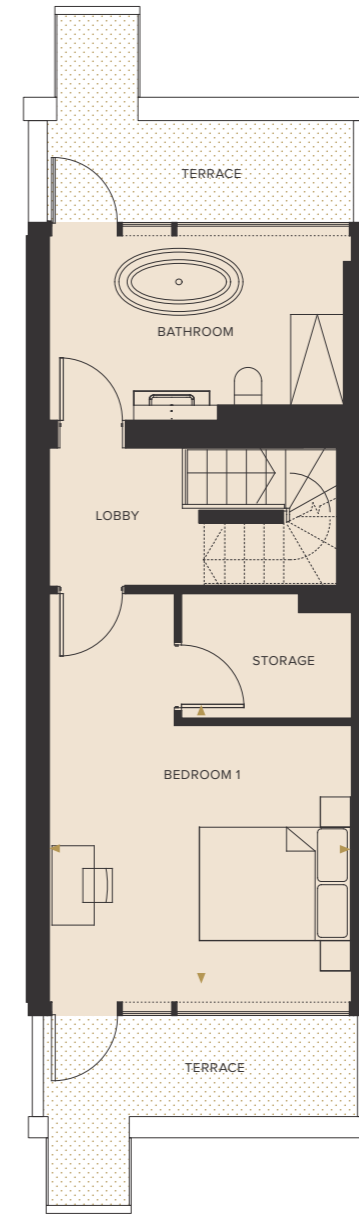
LOWER GROUND FLOOR



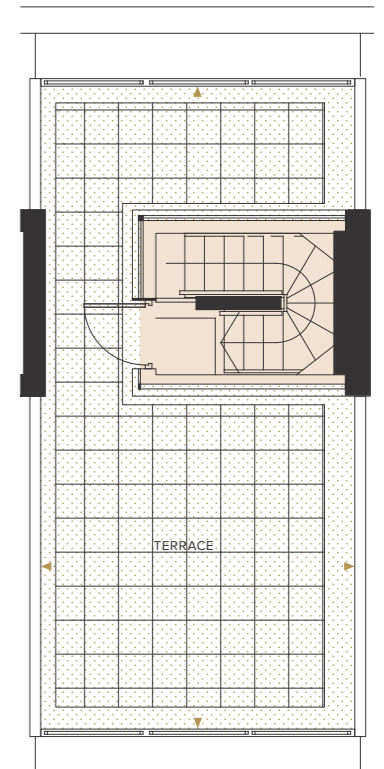
GROUND FLOOR



FIRST FLOOR



SECOND FLOOR



ROOF TERRACE

DISCLAIMER:
Floorplans are for approximate measurements only. Exact layouts and sizes may vary. All measurements may vary within a tolerance of 5%. The dimensions are not intended to be used for carpet sizes, appliance sizes or items of furniture. Furniture shown is not included.

GROUND FLOOR

KEY

- 1** Entrance to car park
- 2** Garden Square
- 3** Pedestrian exit to Alma Road and the station
- 4** Pedestrian exit to city centre
- 5** Pedestrian entrance to car park



LOWER GROUND FLOOR

KEY

- 1** Entrance to car park
- 2** Cycle Parking
- 3** Refuse
- 4** Plant Room
- 5** Pedestrian entrance to car park

