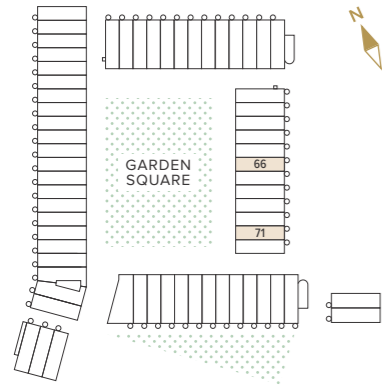


TYPE C4.V2
4 BEDROOM HOUSE

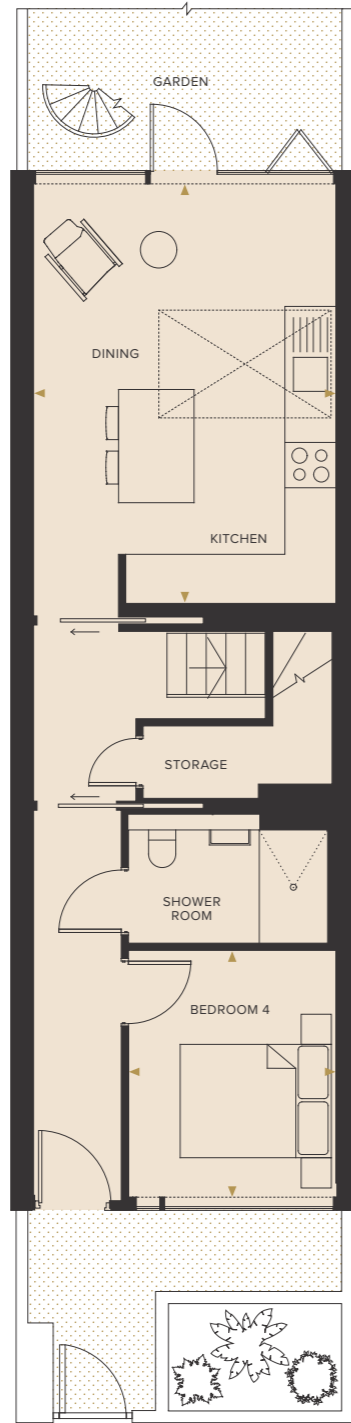
Houses 66, 71



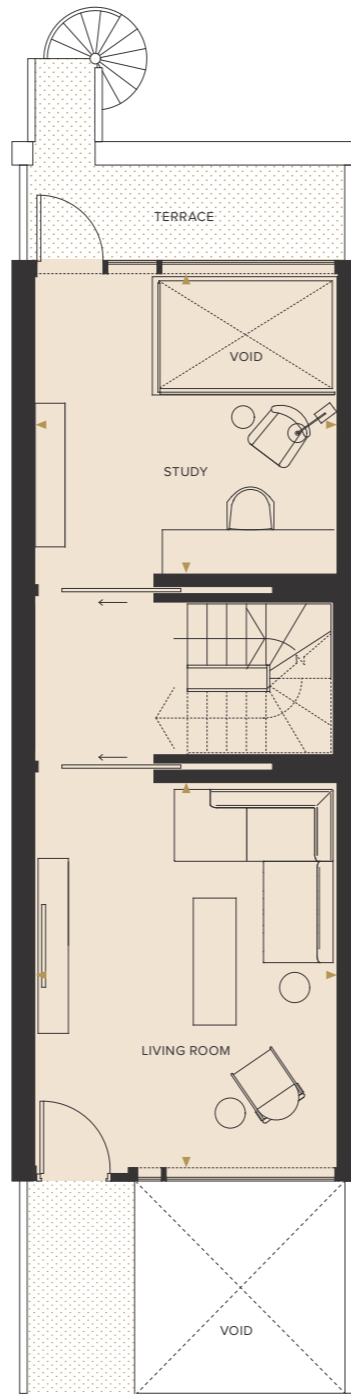
GROSS INTERNAL AREA
194.0 m² 2,088 ft²

- KITCHEN / DINING**
4.00 x 5.54m 13'1" x 18'2"
- LIVING ROOM 1**
4.00 x 5.08m 13'1" x 16'8"
- STUDY**
4.00 x 2.37m 13'1" x 7'9"
- BEDROOM 1**
4.00 x 3.60m 13'1" x 11'9"
- BEDROOM 2**
4.00 x 3.21m 13'1" x 10'6"
- BEDROOM 3**
4.00 x 3.21m 13'1" x 10'6"
- BEDROOM 4**
2.74 x 3.25m 9'0" x 10'7"
- ROOF TERRACE**
4.20 x 6.61m 13'9" x 21'8"

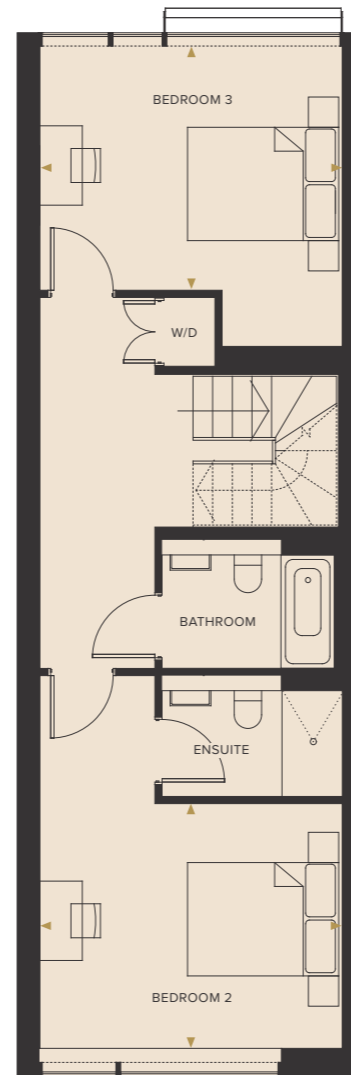
KEY
C : Cupboard
W : Wardrobe
W/D : Washer/Dryer



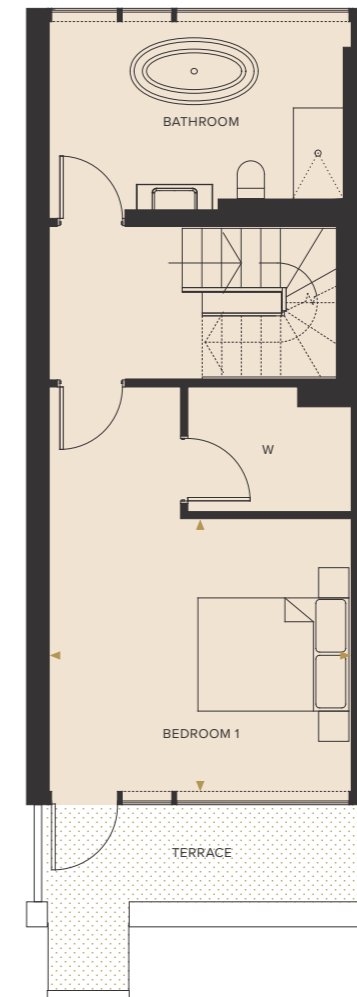
LOWER GROUND FLOOR



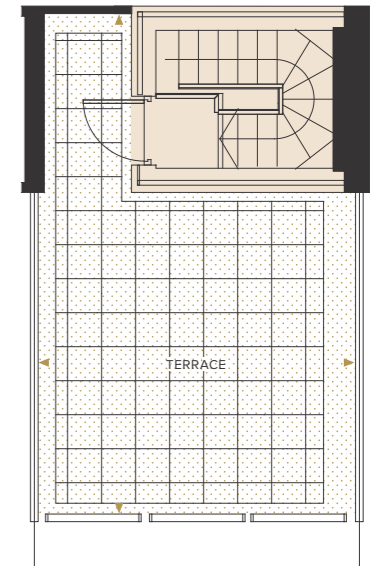
GROUND FLOOR



FIRST FLOOR



SECOND FLOOR



ROOF TERRACE

DISCLAIMER:
Floorplans are for approximate measurements only. Exact layouts and sizes may vary. All measurements may vary within a tolerance of 5%. The dimensions are not intended to be used for carpet sizes, appliance sizes or items of furniture. Furniture shown is not included.



GARDEN SQUARE

GROUND FLOOR

KEY

- 1** Entrance to car park
- 2** Garden Square
- 3** Pedestrian exit to Alma Road and the station
- 4** Pedestrian exit to city centre
- 5** Pedestrian entrance to car park



LOWER GROUND FLOOR

KEY

- 1** Entrance to car park
- 2** Cycle Parking
- 3** Refuse
- 4** Plant Room
- 5** Pedestrian entrance to car park



DISCLAIMER:
The site plan is indicative only and subject to change. In line with our policy of continuous improvement we reserve the right to alter the layout, building, style, landscaping and specification at anytime without notice.