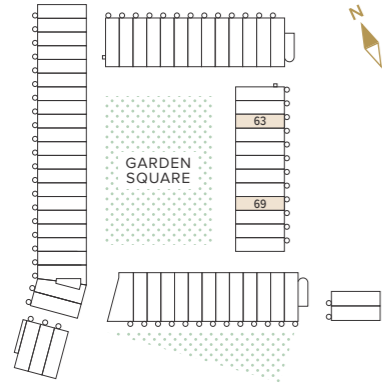


# TYPE C4.1 4 BEDROOM HOUSE

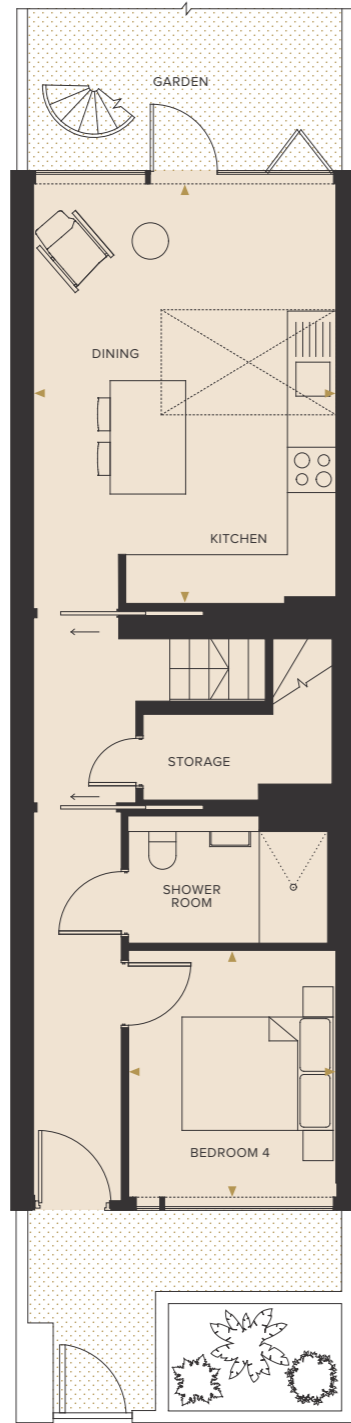
Houses 63, 69



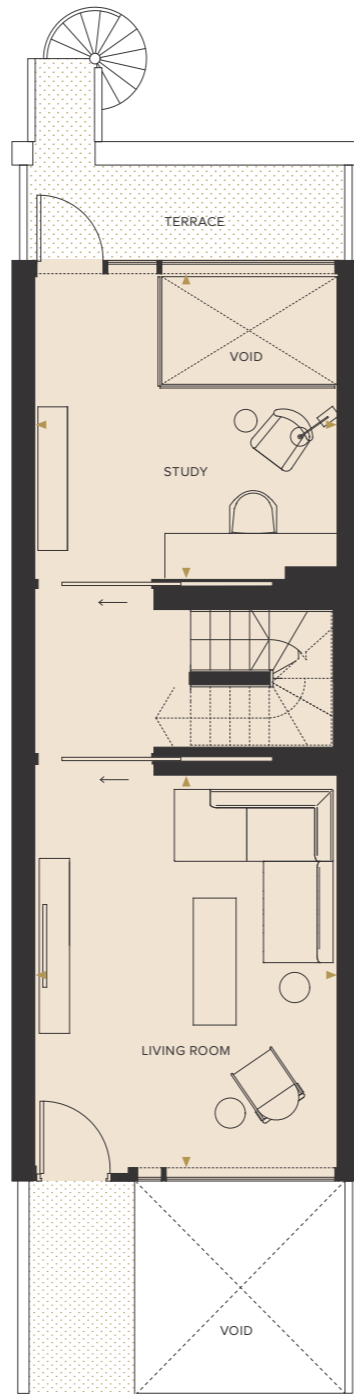
**GROSS INTERNAL AREA**  
194.0 m<sup>2</sup>    2,088 ft<sup>2</sup>

- KITCHEN / DINING**  
4.00 x 5.54m    13'1" x 18'2"
- LIVING ROOM 1**  
4.00 x 5.19m    13'1" x 17'0"
- STUDY**  
4.00 x 2.35m    13'1" x 7'8"
- BEDROOM 1**  
4.00 x 3.70m    13'1" x 12'1"
- BEDROOM 2**  
4.00 x 5.02m    13'1" x 16'5"
- BEDROOM 3**  
4.00 x 3.08m    13'1" x 10'1"
- BEDROOM 4**  
2.74 x 3.25m    9'0" x 10'7"
- ROOF TERRACE**  
4.20 x 6.61m    13'9" x 21'8"

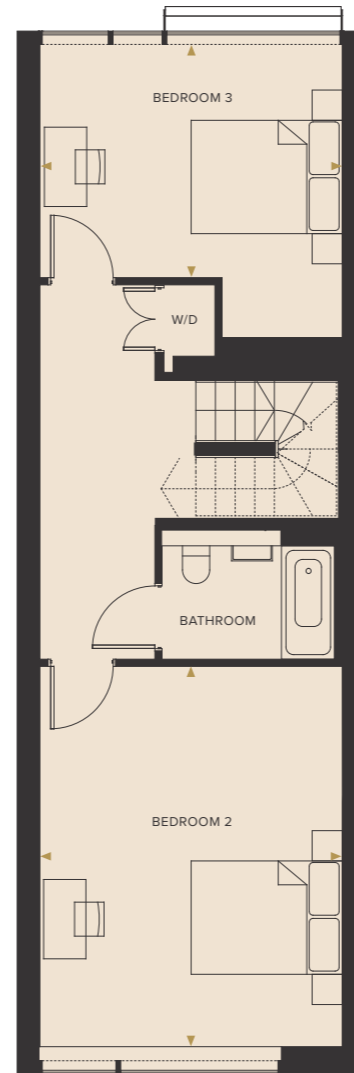
**KEY**  
C : Cupboard  
W : Wardrobe  
W/D : Washer/Dryer



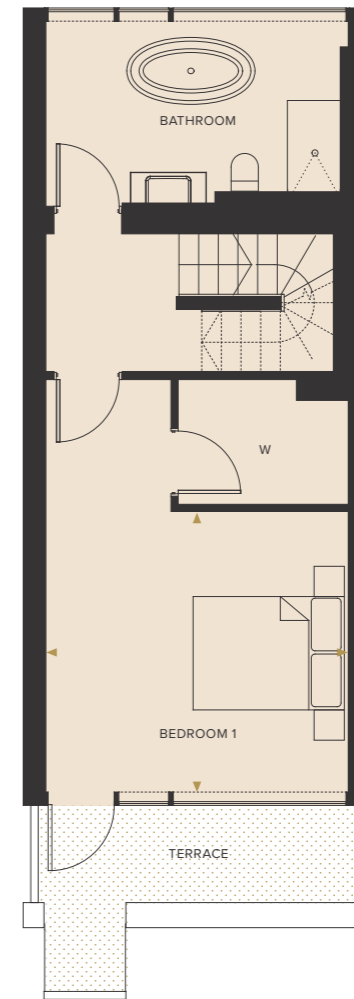
LOWER GROUND FLOOR



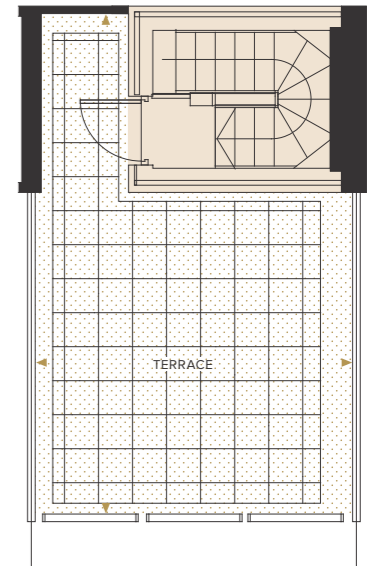
GROUND FLOOR



FIRST FLOOR



SECOND FLOOR



ROOF TERRACE

**DISCLAIMER:**  
Floorplans are for approximate measurements only. Exact layouts and sizes may vary. All measurements may vary within a tolerance of 5%. The dimensions are not intended to be used for carpet sizes, appliance sizes or items of furniture. Furniture shown is not included.



GARDEN SQUARE

# GROUND FLOOR

## KEY

- 1** Entrance to car park
- 2** Garden Square
- 3** Pedestrian exit to Alma Road and the station
- 4** Pedestrian exit to city centre
- 5** Pedestrian entrance to car park



DISCLAIMER:  
The site plan is indicative only and subject to change. In line with our policy of continuous improvement we reserve the right to alter the layout, building, style, landscaping and specification at anytime without notice.

# LOWER GROUND FLOOR

## KEY

- 1** Entrance to car park
- 2** Cycle Parking
- 3** Refuse
- 4** Plant Room
- 5** Pedestrian entrance to car park



DISCLAIMER:  
The site plan is indicative only and subject to change. In line with our policy of continuous improvement we reserve the right to alter the layout, building, style, landscaping and specification at anytime without notice.