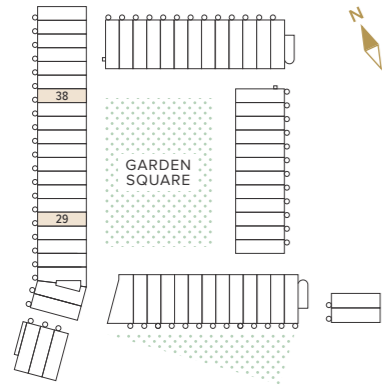


**TYPE A.V1**  
**4 BEDROOM HOUSE**

Houses 29, 38



**GROSS INTERNAL AREA**

194.0 m<sup>2</sup>    2,088 ft<sup>2</sup>

**KITCHEN / DINING**  
4.00 x 5.64m    13'1" x 18'6"

**GARAGE**  
4.00 x 5.00m    13'1" x 16'5"

**LIVING ROOM 1**  
4.00 x 5.14m    13'1" x 16'10"

**LIVING ROOM 2**  
4.00 x 4.06m    13'1" x 13'3"

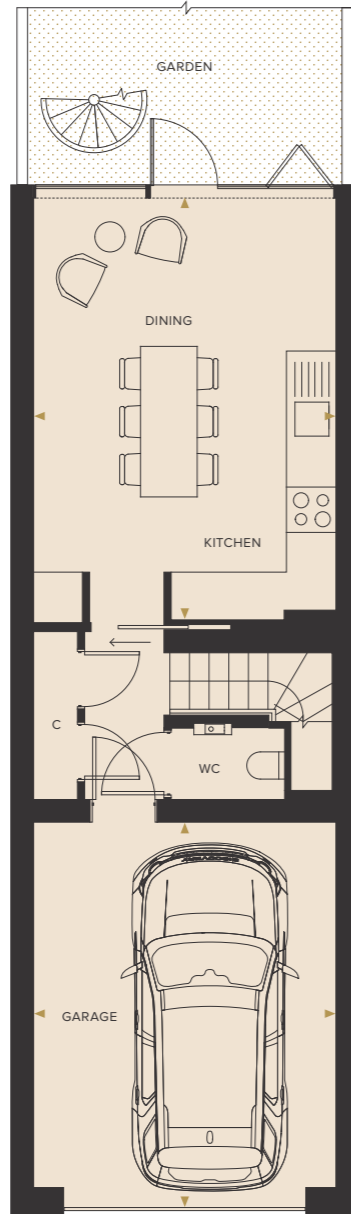
**BEDROOM 1**  
4.00 x 3.95m    13'1" x 12'11"

**BEDROOM 2**  
4.00 x 4.06m    13'1" x 13'3"

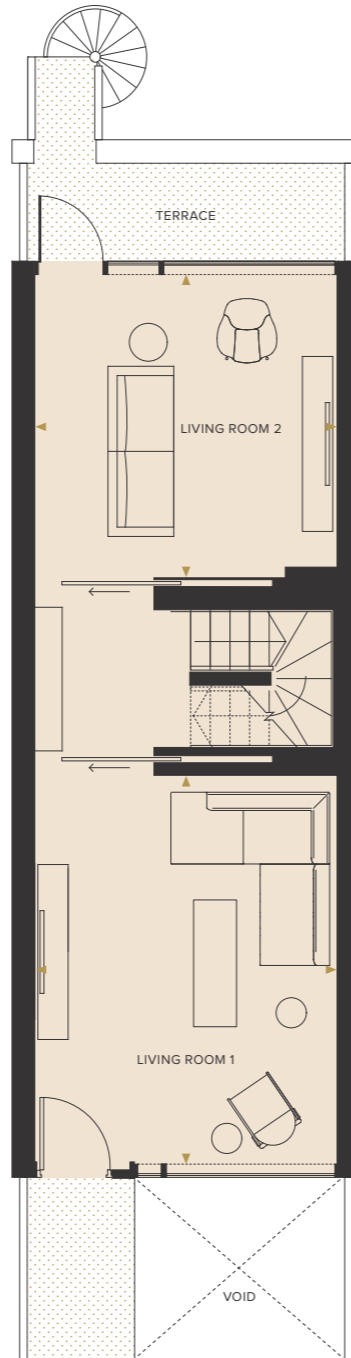
**BEDROOM 3**  
4.00 x 3.30m    13'1" x 10'9"

**BEDROOM 4 / STUDY**  
4.00 x 2.42m    13'1" x 7'11"

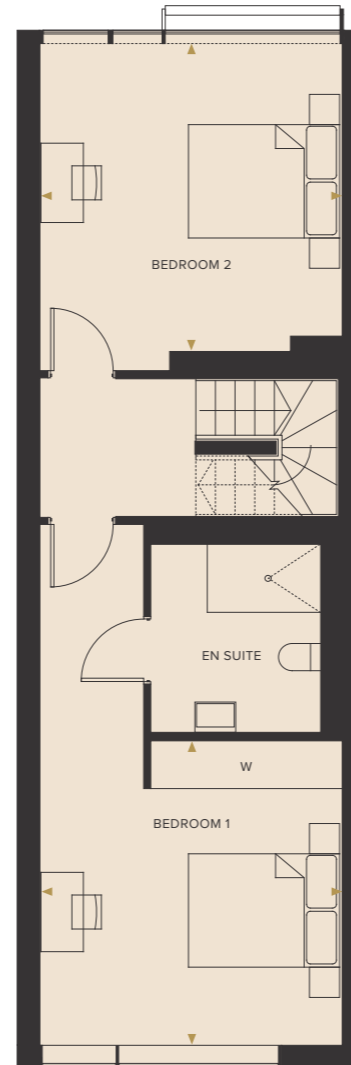
**ROOF TERRACE**  
4.20 x 6.60m    13'9" x 21'7"



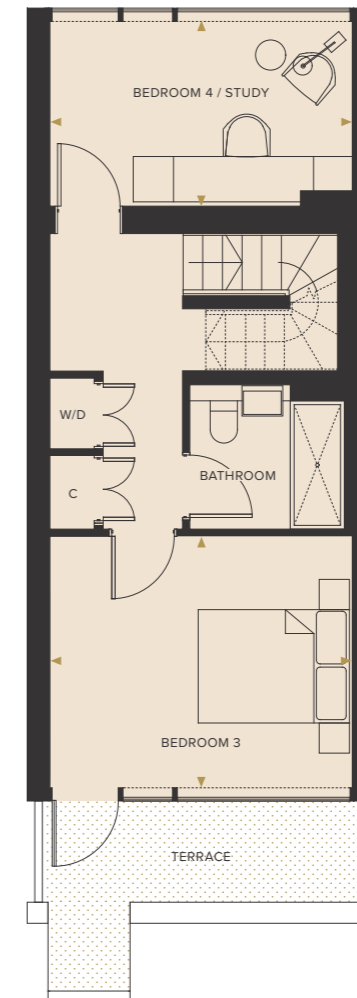
LOWER GROUND FLOOR



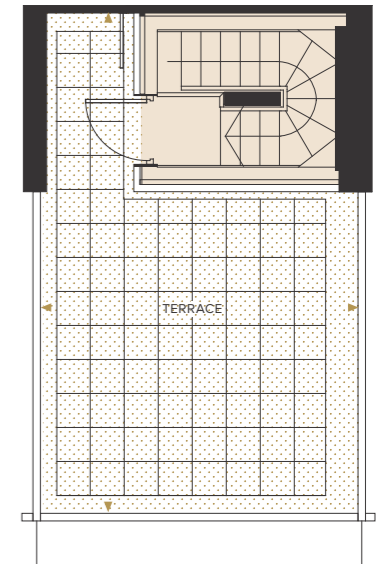
GROUND FLOOR



FIRST FLOOR



SECOND FLOOR



ROOF TERRACE

**KEY**  
C : Cupboard  
W : Wardrobe  
W/D : Washer/Dryer

**DISCLAIMER:**  
Floorplans are for approximate measurements only. Exact layouts and sizes may vary. All measurements may vary within a tolerance of 5%. The dimensions are not intended to be used for carpet sizes, appliance sizes or items of furniture. Furniture shown is not included.



# GROUND FLOOR

## KEY

- 1** Entrance to car park
- 2** Garden Square
- 3** Pedestrian exit to Alma Road and the station
- 4** Pedestrian exit to city centre
- 5** Pedestrian entrance to car park



DISCLAIMER:  
The site plan is indicative only and subject to change. In line with our policy of continuous improvement we reserve the right to alter the layout, building, style, landscaping and specification at anytime without notice.

# LOWER GROUND FLOOR

## KEY

- 1** Entrance to car park
- 2** Cycle Parking
- 3** Refuse
- 4** Plant Room
- 5** Pedestrian entrance to car park

