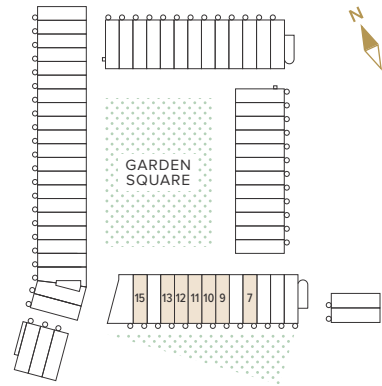


TYPE A3 4 BEDROOM HOUSE

Houses 7, 9, 10, 11, 12, 13, 15



GROSS INTERNAL AREA

194.0 m² 2,088 ft²

KITCHEN / DINING
4.00 x 5.64m 13'1" x 18'6"

GARAGE
4.00 x 5.00m 13'1" x 16'5"

LIVING ROOM 1
4.00 x 5.14m 13'1" x 16'10"

LIVING ROOM 2
4.00 x 4.06m 13'1" x 13'3"

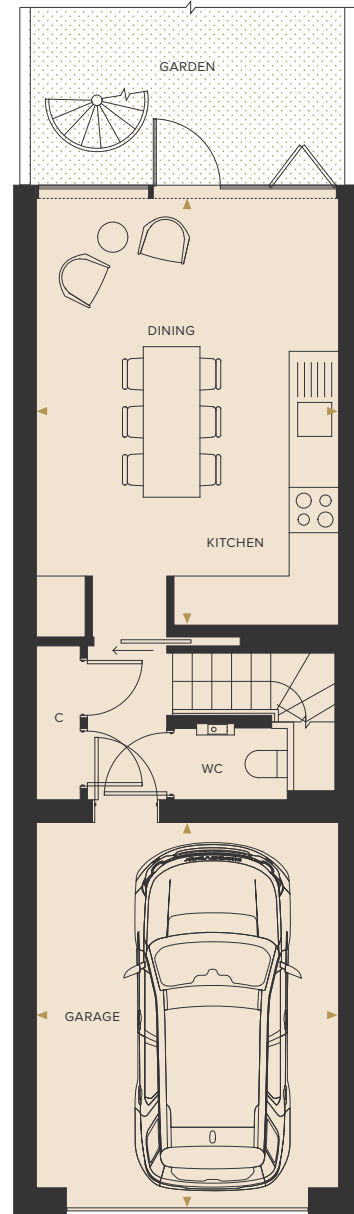
BEDROOM 1
4.00 x 4.02m 13'1" x 13'2"

BEDROOM 2
4.00 x 4.32m 13'1" x 14'2"

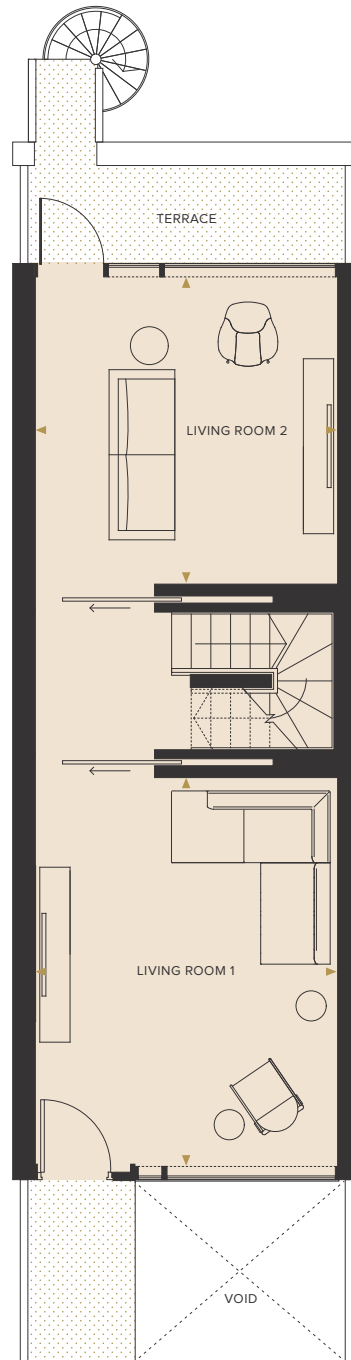
BEDROOM 3
4.00 x 3.30m 13'1" x 10'9"

BEDROOM 4 / STUDY
4.00 x 2.69m 13'1" x 8'9"

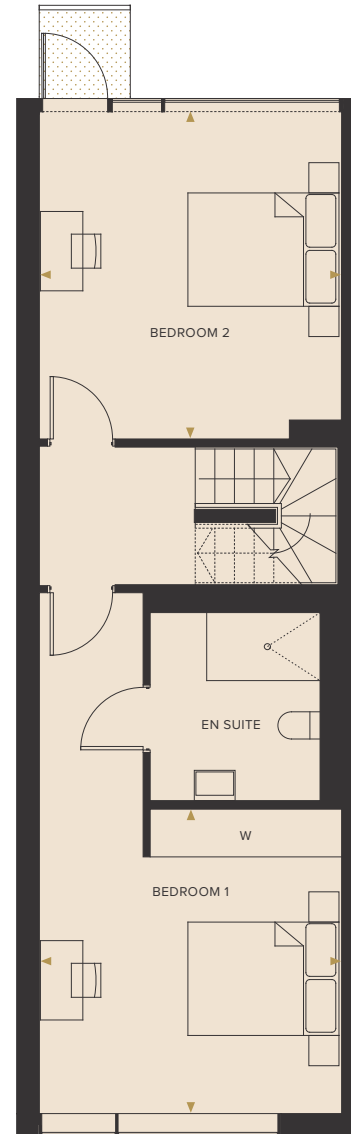
ROOF TERRACE
4.20 x 8.44m 13'9" x 27'8"



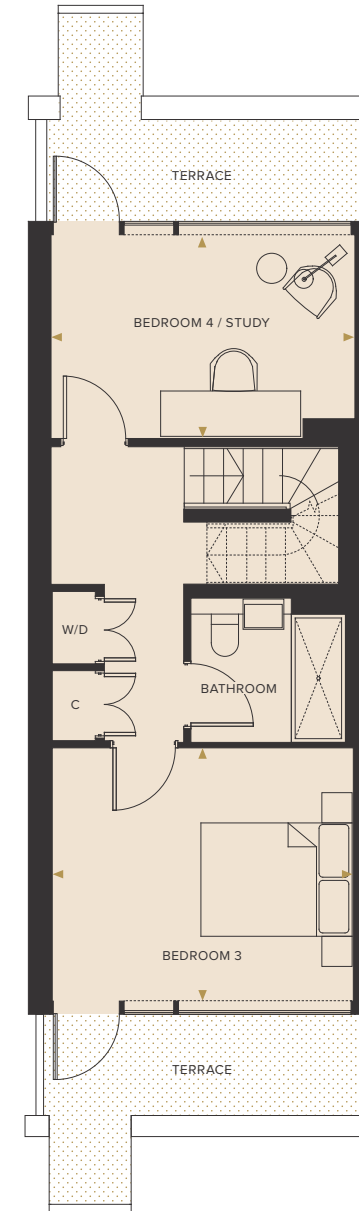
LOWER GROUND FLOOR



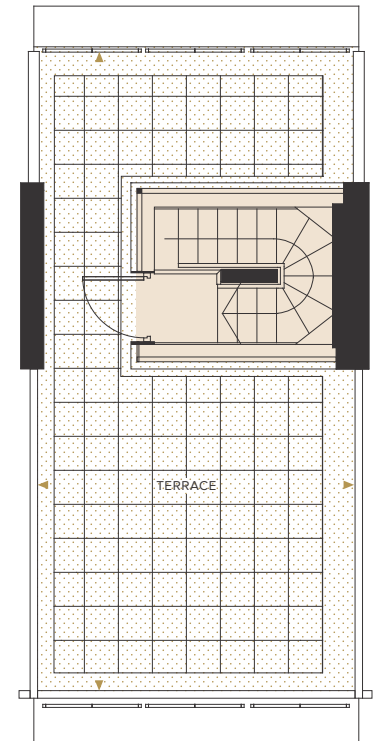
GROUND FLOOR



FIRST FLOOR



SECOND FLOOR



ROOF TERRACE

KEY
C : Cupboard
W : Wardrobe
W/D : Washer/Dryer

DISCLAIMER:
Floorplans are for approximate measurements only. Exact layouts and sizes may vary. All measurements may vary within a tolerance of 5%. The dimensions are not intended to be used for carpet sizes, appliance sizes or items of furniture. Furniture shown is not included.



GROUND FLOOR

KEY

- 1** Entrance to car park
- 2** Garden Square
- 3** Pedestrian exit to Alma Road and the station
- 4** Pedestrian exit to city centre
- 5** Pedestrian entrance to car park



LOWER GROUND FLOOR

KEY

- 1** Entrance to car park
- 2** Cycle Parking
- 3** Refuse
- 4** Plant Room
- 5** Pedestrian entrance to car park

