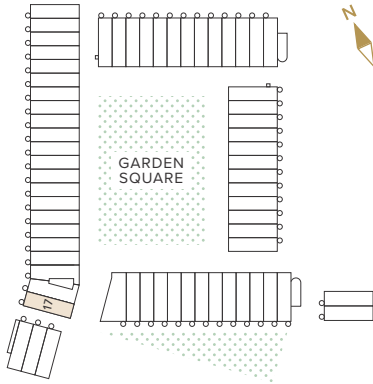


TYPE F1 2 BEDROOM

KEY
C : Cupboard
W : Wardrobe
W/D : Washer/Dryer

Duplex 17



GROSS INTERNAL AREA

100.0 m² 1,076 ft²

KITCHEN / DINING

3.95 x 4.02m 12'11" x 13'2"

LIVING

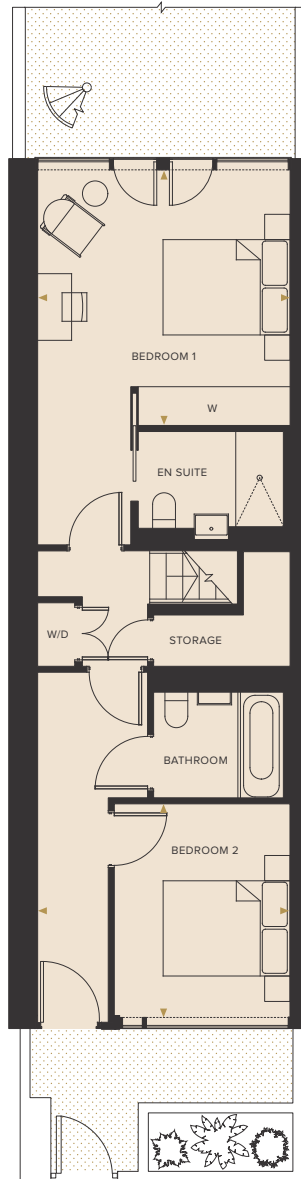
3.95 x 5.12m 12'11" x 16'9"

BEDROOM 1

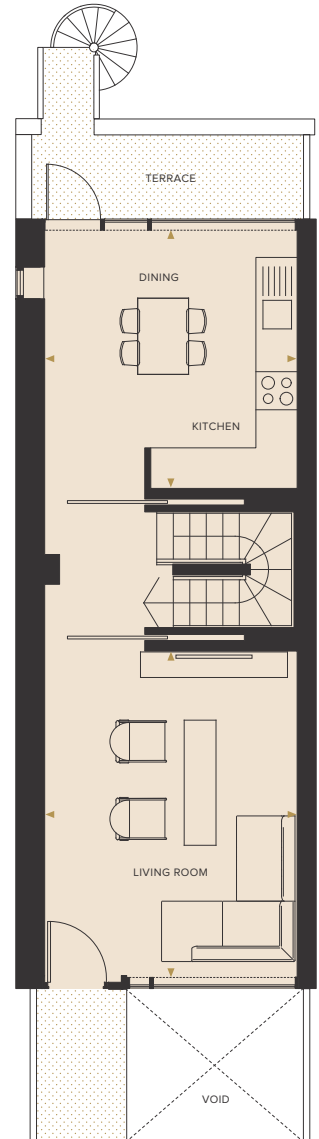
3.95 x 4.00m 12'11" x 13'1"

BEDROOM 2

2.75 x 3.35m 9'0" x 10'11"



LOWER GROUND FLOOR



GROUND FLOOR

DISCLAIMER:
Floorplans are for approximate measurements only. Exact layouts and sizes may vary. All measurements may vary within a tolerance of 5%. The dimensions are not intended to be used for carpet sizes, appliance sizes or items of furniture. Furniture shown is not included.

GROUND FLOOR

KEY

- 1** Entrance to car park
- 2** Garden Square
- 3** Pedestrian exit to Alma Road and the station
- 4** Pedestrian exit to city centre
- 5** Pedestrian entrance to car park
- 6** Access to duplexes 95, 97, 99
- 7** Access to apartments 19-24
- 8** Access to apartments 58, 59, 60
- 9** Access to apartments 4, 5, 6



DISCLAIMER:
The site plan is indicative only and subject to change. In line with our policy of continuous improvement we reserve the right to alter the layout, building, style, landscaping and specification at anytime without notice.

LOWER GROUND FLOOR

KEY

- 1** Entrance to car park
- 2** Cycle Parking
- 3** Cycle Parking
- 4** Plant Room
- 5** Pedestrian entrance to car park
- 6** Access to apartments 58, 59, 60
- 7** Access to apartments 4, 5, 6



DISCLAIMER:
The site plan is indicative only and subject to change. In line with our policy of continuous improvement we reserve the right to alter the layout, building, style, landscaping and specification at anytime without notice.