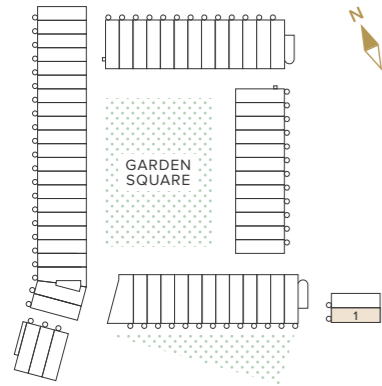


TYPE B2 4 BEDROOM HOUSE

House 1 ALMA ROAD



GROSS INTERNAL AREA
205.0 m² 2,207 ft²

KITCHEN / DINING
4.00 x 5.60m 13'1" x 18'4"

LIVING ROOM 1
4.00 x 5.14m 13'1" x 16'10"

LIVING ROOM 2
4.00 x 4.00m 13'1" x 13'1"

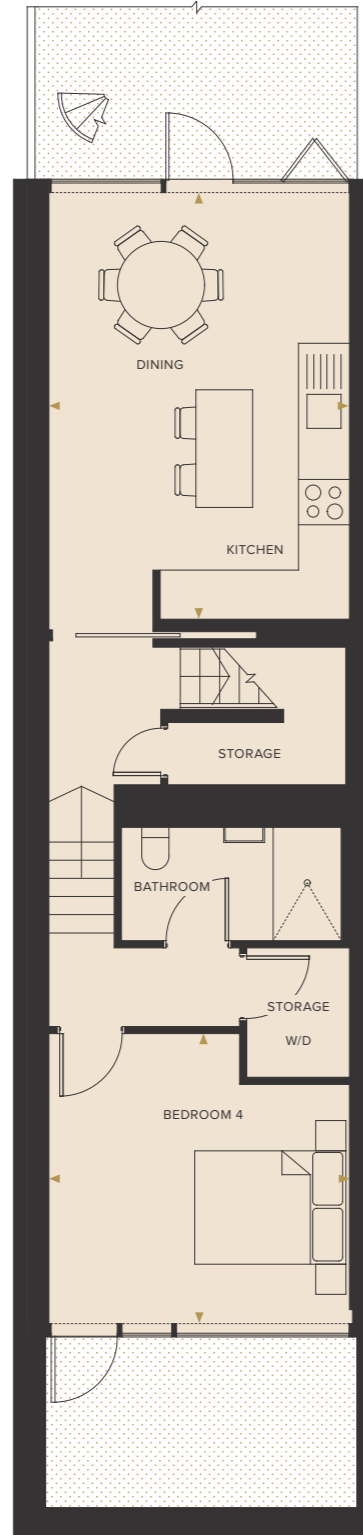
BEDROOM 1
4.00 x 3.20m 13'1" x 10'6"

BEDROOM 2
4.00 x 4.96m 13'1" x 16'3"

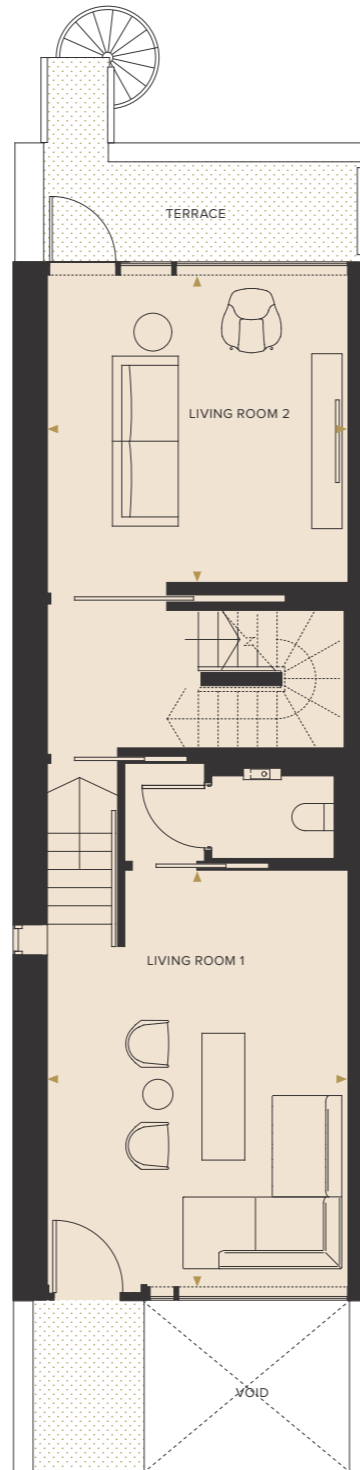
BEDROOM 3
4.00 x 4.30m 13'1" x 14'1"

BEDROOM 4
4.00 x 3.80m 13'1" x 12'5"

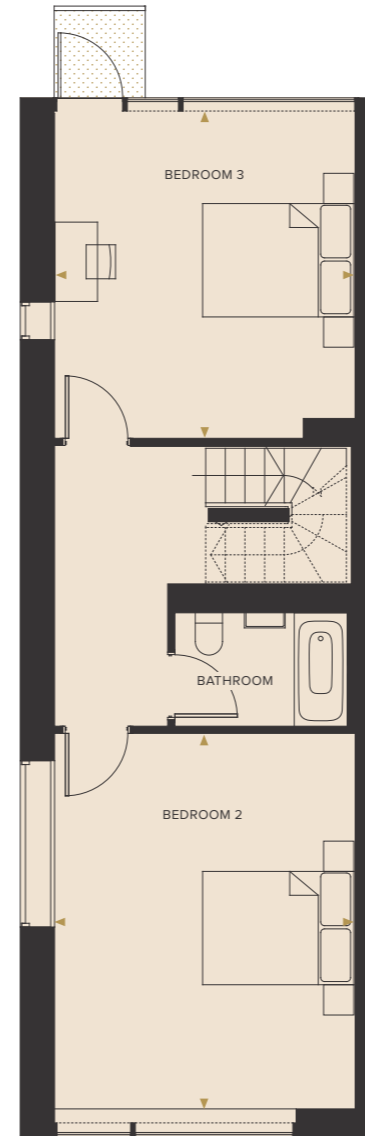
ROOF TERRACE
3.40 x 8.35m 11'1" x 27'4"



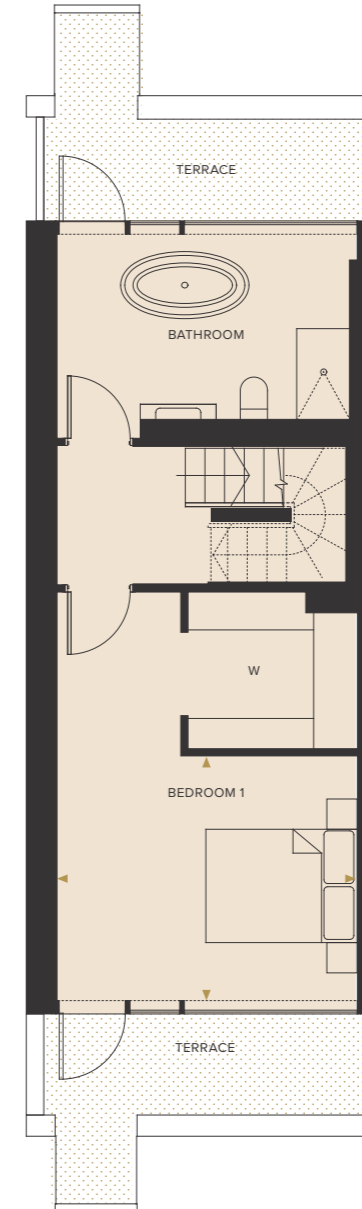
LOWER GROUND FLOOR



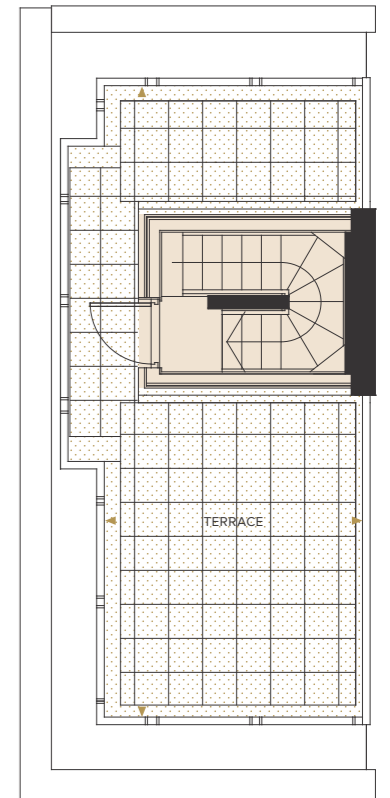
GROUND FLOOR



FIRST FLOOR



SECOND FLOOR



ROOF TERRACE

KEY
C : Cupboard
W : Wardrobe
W/D : Washer/Dryer

DISCLAIMER:
Floorplans are for approximate measurements only. Exact layouts and sizes may vary. All measurements may vary within a tolerance of 5%. The dimensions are not intended to be used for carpet sizes, appliance sizes or items of furniture. Furniture shown is not included.

GROUND FLOOR

KEY

- 1** Entrance to car park
- 2** Garden Square
- 3** Pedestrian exit to Alma Road and the station
- 4** Pedestrian exit to city centre
- 5** Pedestrian entrance to car park



LOWER GROUND FLOOR

KEY

- 1** Entrance to car park
- 2** Cycle Parking
- 3** Refuse
- 4** Plant Room
- 5** Pedestrian entrance to car park

