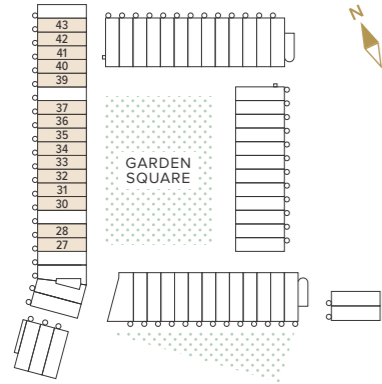


TYPE A 4 BEDROOM HOUSE

Houses 27, 28, 30-37, 39-43



GROSS INTERNAL AREA

194.0 m² 2,088 ft²

KITCHEN / DINING
4.00 x 5.64m 13'1" x 18'6"

GARAGE
4.00 x 5.00m 13'1" x 16'5"

LIVING ROOM 1
4.00 x 5.14m 13'1" x 16'10"

LIVING ROOM 2
4.00 x 4.06m 13'1" x 13'3"

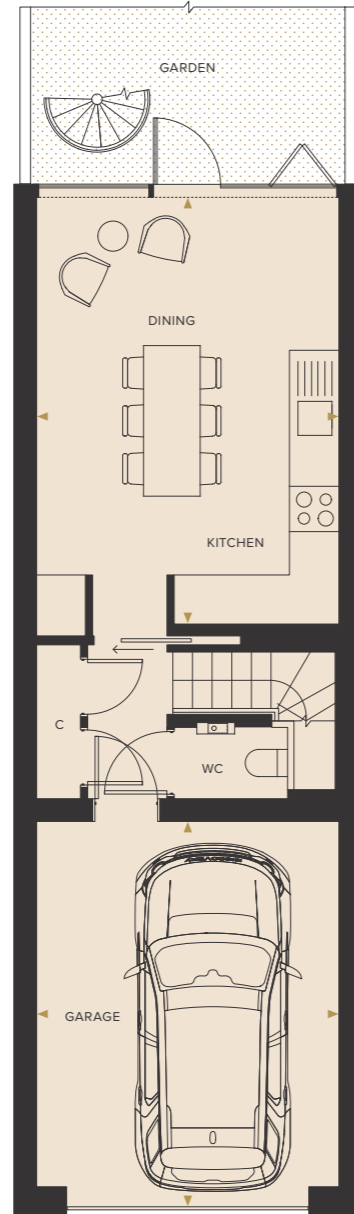
BEDROOM 1
4.00 x 3.95m 13'1" x 12'11"

BEDROOM 2
4.00 x 4.32m 13'1" x 14'2"

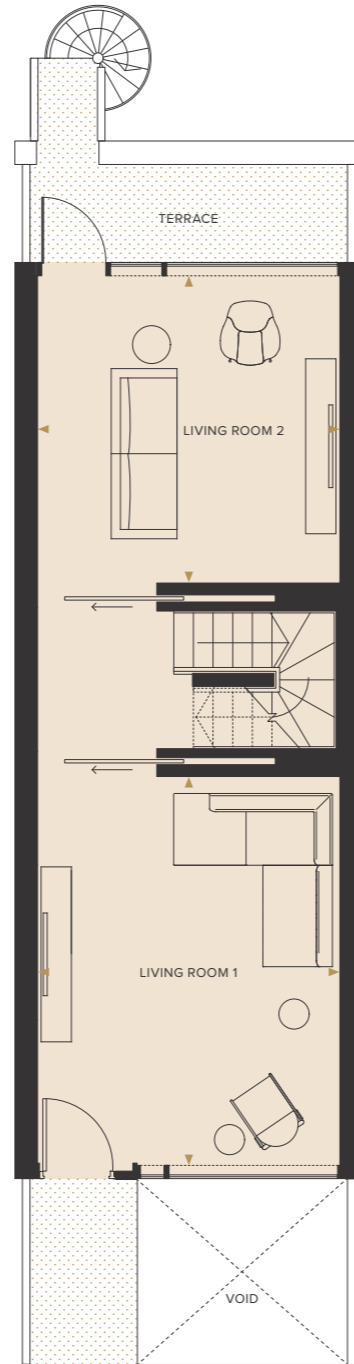
BEDROOM 3
4.00 x 3.30m 13'1" x 10'9"

BEDROOM 4 / STUDY
4.00 x 2.69m 13'1" x 8'9"

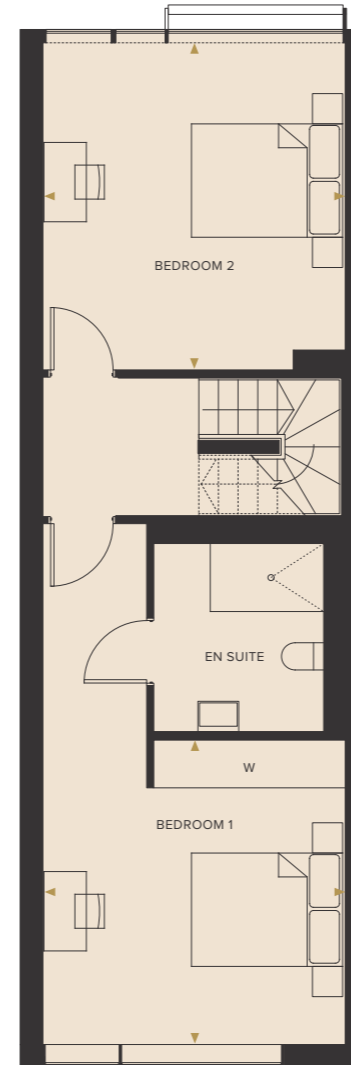
ROOF TERRACE
4.20 x 6.60m 13'9" x 21'7"



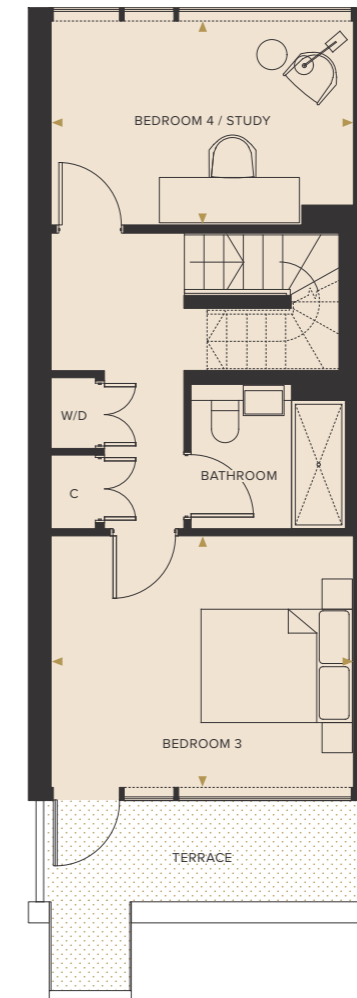
LOWER GROUND FLOOR



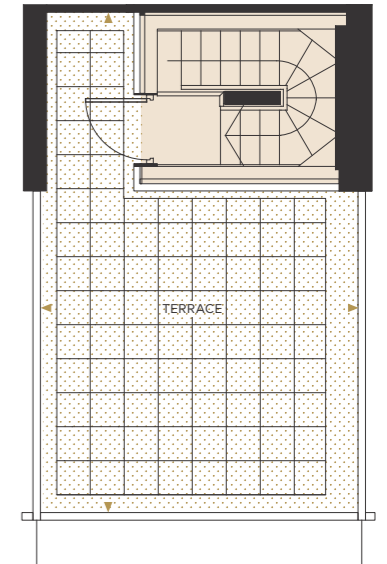
GROUND FLOOR



FIRST FLOOR



SECOND FLOOR



ROOF TERRACE

KEY
C : Cupboard
W : Wardrobe
W/D : Washer/Dryer

DISCLAIMER:
Floorplans are for approximate measurements only. Exact layouts and sizes may vary. All measurements may vary within a tolerance of 5%. The dimensions are not intended to be used for carpet sizes, appliance sizes or items of furniture. Furniture shown is not included.



GROUND FLOOR

KEY

- 1** Entrance to car park
- 2** Garden Square
- 3** Pedestrian exit to Alma Road and the station
- 4** Pedestrian exit to city centre
- 5** Pedestrian entrance to car park



LOWER GROUND FLOOR

KEY

- 1** Entrance to car park
- 2** Cycle Parking
- 3** Refuse
- 4** Plant Room
- 5** Pedestrian entrance to car park



DISCLAIMER:
The site plan is indicative only and subject to change. In line with our policy of continuous improvement we reserve the right to alter the layout, building, style, landscaping and specification at anytime without notice.